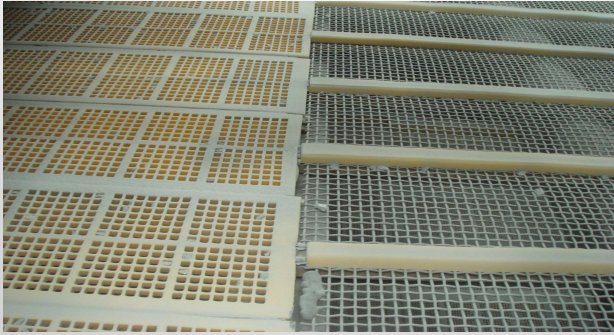


Screening Operations



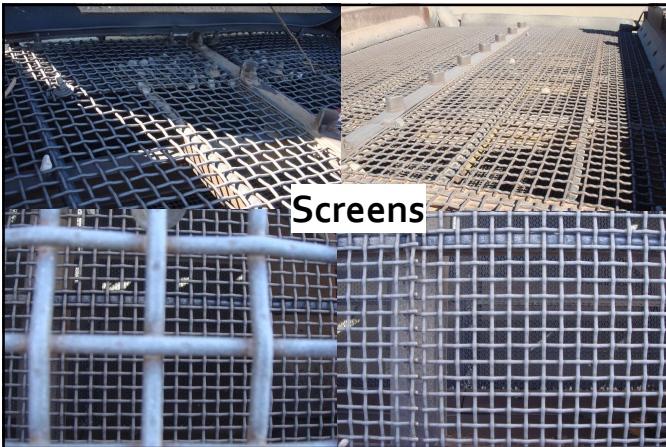
Screens



Screening Operations












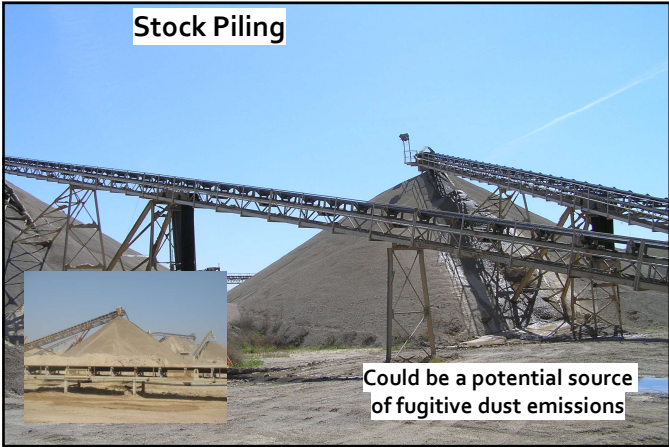


Point Emissions

- Point emissions originate from stacks
 - Control Devices
 - Where aggregate is dried
- Stack emissions
 - Moisture
 - Gases
 - PM/PM₁₀/PM_{2.5}
 - All of the above









Storage & Loadout Operations



Air Pollution Control Measures

- Preventative Measures
 - Passive Enclosures
 - Wet/Chemical Suppression
 - Paved Surface/Cleaning
- Dry Collection Systems
 - baghouse
 - cyclone



Process & Control Measures

Control

- Moving conveyors or trucks (passive control is wind screens)

Operations

- Crushing (active control is water)
- Transfer (active control is water)

Air Pollution & Control Measures

- Water sprays
- Maintaining good housekeeping
- Covers
- Enclosure or cover at transfer points and screening operations
- Exhausting air to air pollution control systems

Preventative Measures

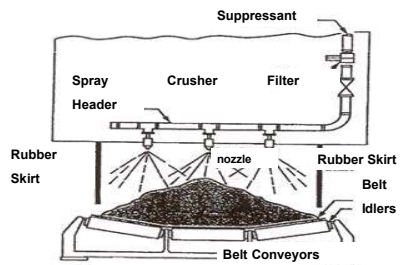
- Passive enclosures
- Wet suppression
- Stabilization of unpaved surfaces
- Minimizing drop height
- Paved surfaces cleaning
- Work practices
- Housekeeping



Preventative Measures



Preventative Measures





Dry Collection Systems



Baghouses are regulated in terms of:

- Grains/cubic foot of air emitted (gr./dscf)
- Pounds/Ton of Aggregate produced
- Opacity



Baghouse in Disrepair

Combination Systems

Dry collection and wet suppression

- When fine particulates have an economic value in addition to meeting air pollution control laws
- Due to screen blinding
- Due to plant location or local pollution control codes, which is not economically feasible

Other Processing Equipment

- | | |
|------------------|---------------------|
| • Rock Breaker | • Washing equipment |
| • Magnets | • Rotary Scrubber |
| • Metal detector | • Wet classifiers |
| • Pugmills | • Pumps |
| • PERP equipment | • Grinding Mills |

Inspection Objectives

Determine compliance with:

- District regulations & permit conditions
- Fugitive dust
- Visible emissions
- Oxides of nitrogen (for fuel burning equipment)
- Control devices

Pre-Inspection

- Regulation Review
- Equipment Check
 - Safety goggles and earplugs
 - Safety shoes, hard hat, and gloves
 - ID and business cards

Pre-Inspection File Review

- | | |
|-----------------------------------|------------------------------|
| 1. Permit application | 6. NTC/NOV |
| 2. Approved permit | 7. Compliance action |
| 3. Equipment | 8. Complaints |
| 4. Permit condition for each unit | 9. Variance history |
| 5. Previous inspection reports | 10. Abatement orders |
| | 11. Date of last source test |

Pre - Entry & Entry

- Observe the site
 - Note odors or visible emissions
 - Size and layout
 - Environmental demeanor
- ID potential problem areas
- Enter through normal public access
- Introduce yourself, ask to see contact listed in file, & present business card



Pre – Inspection Meeting

- State purpose of inspection and identify equipment to be inspected
- Discuss any outstanding business
- Obtain
 - Company name
 - Ownership information
 - Address
 - Contact information
 - Operating schedule, date of last source test and fuel usage

Pre-Inspection Meeting

- Date of last break down
- Determine the statuses of:
 - Dust suppression equipment
 - Air pollution control equipment
 - Monitoring and recording devices
- Check permit

Non - Compliance

A NTC/NOV is issued when:

- The permit is not:
 1. Current or no permit
 2. Posted properly
- Or conditions on permit are not followed
- Or blatant disregard for the permit conditions



Post - Inspection

- Make compliance determination
- Inform site of inspection (NOVs, and advise on areas of concern)
- Document pending NOVs due to additional info request etc.